

Thomas Building No. 1 Addendum 1

Date: 9/11/2020

Project **Thomas Building No. 1**
3770 Eagle Loop Road
Hood River, OR 97031

The following list of items shall be incorporated into the contract documents as an addendum issued prior to execution of contract.

Questions/Clarifications:

- 1** Please provide clarification on the water service.
Answer Meters to be 1" per Civil Drawings. Lines to building to be 2-1/2" per plumbing UG.
- 2** Please provide trench drain model number.
Jay R Smith "9870-455-SSHD STAINLESS STEEL SLOTTED HEAVY DUTY GRATE"
Answer See following cut sheets.
- 3** What type of material is the High Strength Sanitary Sewer
Answer Type 316 Stainless Steel.

Rapid Trench Stainless Steel SS3000 Commercial Series

Overview:

Being long, narrow, and straight by its nature, trench drain highlights any imperfections in installation. For this reason, Rapid Trench understands that finish quality really hinges on the contractor's ability to achieve installation perfection. Drawing from the success of the Patent Pending CS1000 Rapid Trench installation system, Rapid Trench channel sections and catch-basins are engineered from the start for their appearance and perform once installed. With individual channel sections reaching lengths of 30+ feet and with precise catch-basin connections, installation and the resulting craftsmanship of the Rapid Trench products are unique in the industry.

SS3000:

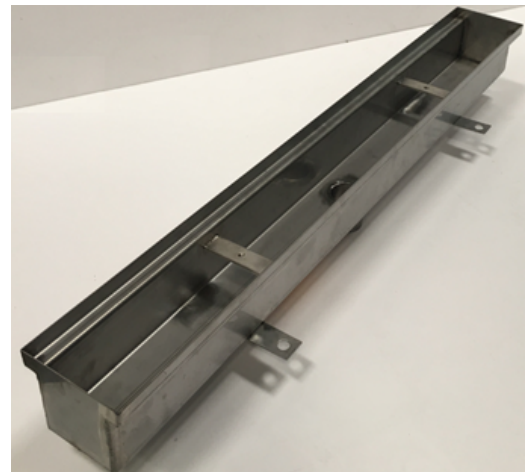
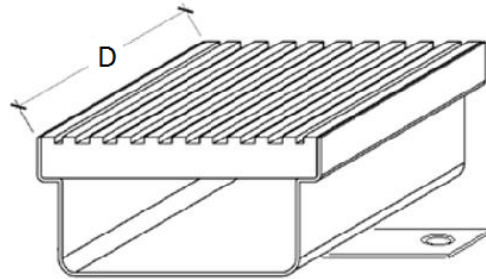
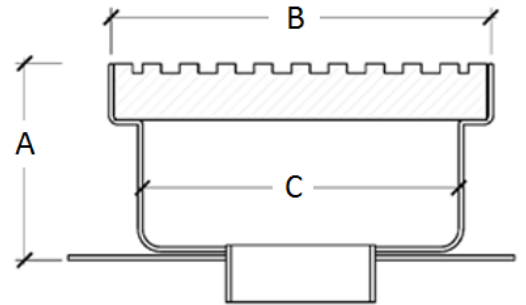
SS3000 is a durable stainless steel trench drain system for your corrosive and/or demanding environment. It can accommodate a variety of grates, depending on the aesthetic and load class requirements.

Features:

- Stainless steel construction
- Integral side tabs for ease of installation

Options:

- Sloping and non-sloping
- Custom sizing of A=channel depth and B=channel length
- Integral end, side, and bottom outlets
- Catch basin with debris basket available
- No hub or threaded outlet
- 16, 14, 12, and 10 gauge construction



MODEL SS3000

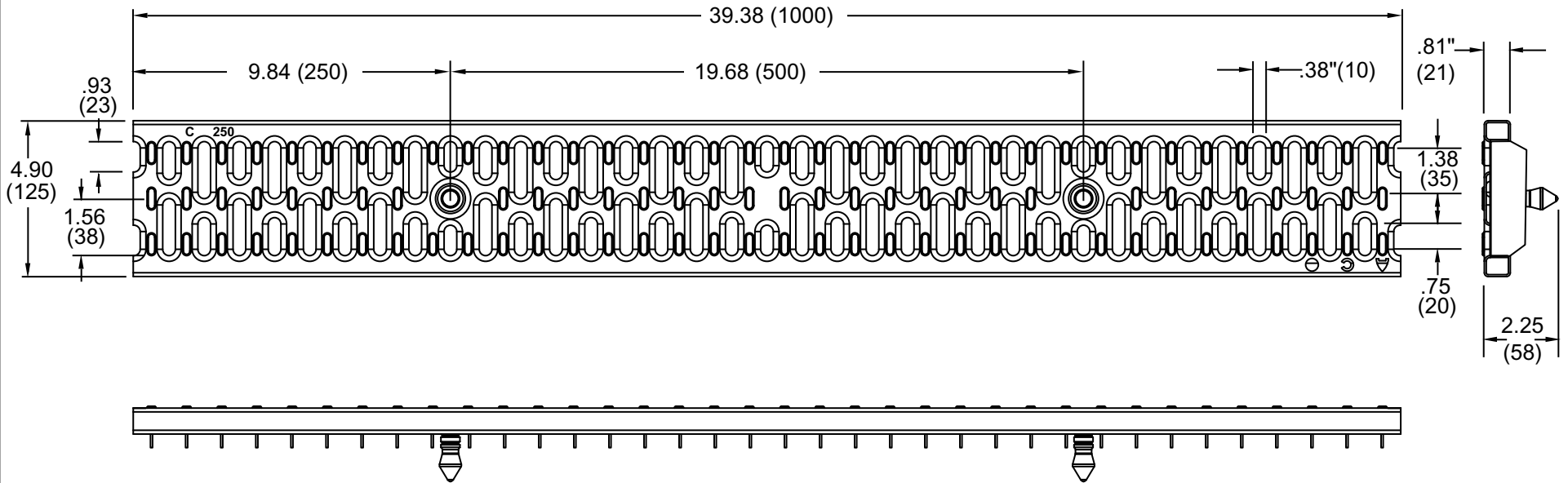
FIGURE NUMBER	9870-455-SSHD	DRAWN BY: RN	CHECKED BY: MD	APPROVED BY: MD	DATE: 2/9/01	SCALE: NONE	SIZE A	DRAWING NUMBER a9870-455-SSHD	A
---------------	----------------------	-----------------	-------------------	--------------------	-----------------	----------------	------------------	----------------------------------	----------

DIMENSIONS ARE SUBJECT TO MANUFACTURERS TOLERANCE AND CHANGE WITHOUT NOTICE

WE CAN ASSUME NO RESPONSIBILITY FOR USE OF SUPERSEDED OR VOID DATA

9870-455-SSHD STAINLESS STEEL SLOTTED HEAVY DUTY GRATE

Heavy Duty, DIN 19580 Class C -56,000 lbs - 1,162 psi
For commercial pneumatic tire traffic patterns, forklifts and tractor trailers



REGULARLY FURNISHED:
 Stainless Steel Slotted
 Grate w/Quicklock Securing
 Feature

VARIATIONS:	
1 Meter Grate	39.38
1/2 Meter Grate	19.68

OPEN AREA
42.60 SQ IN. (1 meter)
21.30 SQ IN. (1/2 meter)

NOTE: Dimensions in parentheses are Metric.

SMITH® JAY R. SMITH MFG. CO.®
 DIVISION OF SMITH INDUSTRIES, INC.
 POST OFFICE BOX 3237
 MONTGOMERY, ALABAMA 36109-0237 (USA)
 TEL: 334-277-8520 FAX: 334-272-7396 www.jrsmith.com



A	8-30-04	Revised Layout	RN	PJ
REV.	DATE	DESCRIPTION	BY	CKD. BY