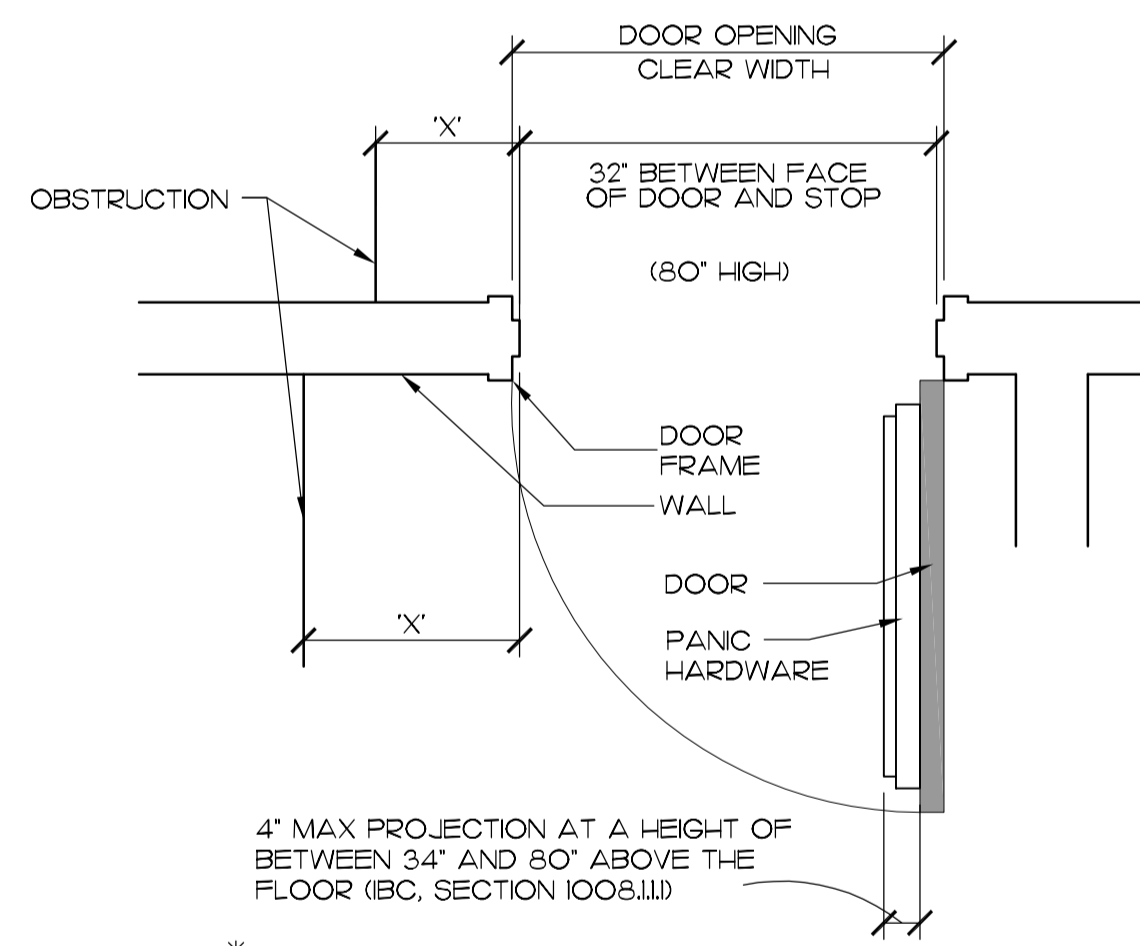
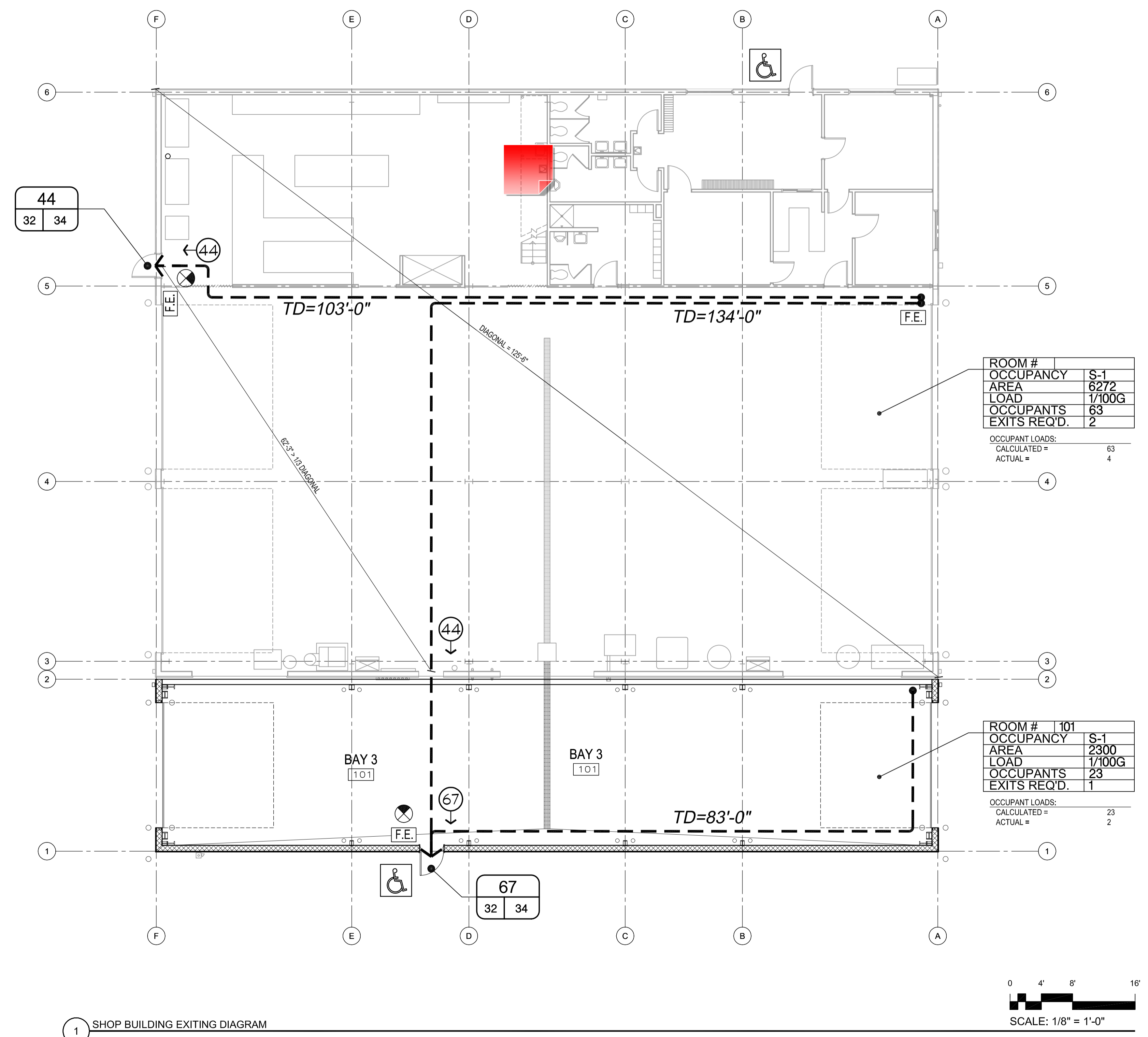


GENERAL NOTES

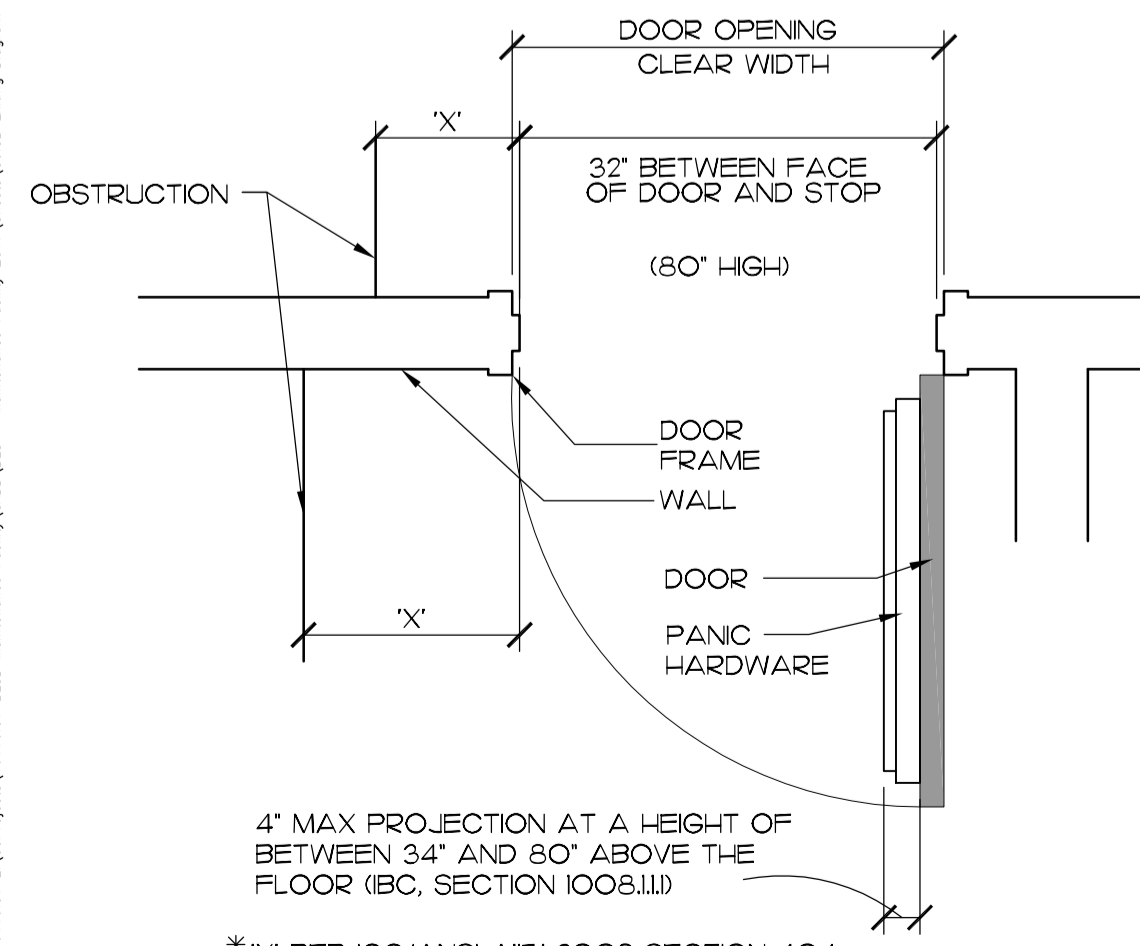
- A. MINIMUM EXITING CLEAR WIDTH:
 1. FOR 36" MAN DOORS= 33.5" CLEAR
 2. FOR (2) 26" MAN DOORS= 67.0" CLEAR
 3. FOR STOREFRONT DOOR= 33" CLEAR
- B. FIRE EXTINGUISHER REQUIREMENTS: PROVIDE NOT LESS THAN (1) ONE APPROVED FIRE EXTINGUISHER AS FOLLOWS (INTERNATIONAL FIRE CODE, SECTION 906):
 1. DURING CONSTRUCTION: FIRE EXTINGUISHER TYPE 2-A10-B-C SHALL BE PROVIDED AT EACH EXIT, AT EVERY STORAGE AND CONSTRUCTION SHED AND AS DIRECTED BY THE CITY FIRE MARSHAL
 2. MOUNTING: TOP OF EXTINGUISHER TO BE LOCATED NO MORE THAN 5'-0" ABOVE FINISH FLOOR. TOP OF EXTINGUISHERS THAT ARE 40 LBS. GROSS WEIGHT OR MORE TO BE MOUNTED NO HIGHER THAN 3'-6" ABOVE FINISH FLOOR. BOTTOM OF EXTINGUISHERS OR CABINET TO BE NO LESS THAN 4" ABOVE FINISH FLOOR
 3. FINAL INSTALLATION: PROVIDE ONE FIRE EXTINGUISHER WITHIN 50 FEET TRAVEL DISTANCE FROM ANY POINT IN THE FACILITY
- C. PORTABLE FIRE EXTINGUISHERS SHALL BE IN ACCORDANCE WITH IFC STANDARDS
- D. GENERAL CONTRACTOR IS RESPONSIBLE FOR PROJECT SAFETY PROVISIONS, AND MAINTAINING CLEARLY IDENTIFIED EXITING ROUTES DURING CONSTRUCTION
- E. PROJECT WILL BE PROTECTED BY AN APPROVED FIRE SPRINKLER SYSTEM IN CONFORMANCE WITH OSSC SECTION 903

LEGEND

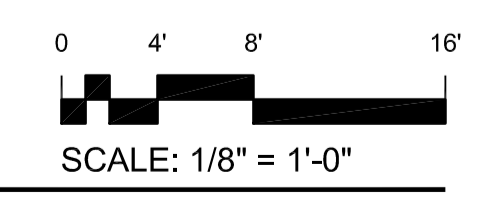
- TOTAL OCCUPANT LOAD EXITING SPACE AT INTERIOR
- MEANS OF EGRESS TRAVEL DISTANCE
- FIRE EXTINGUISHER VERIFY QUANTITY AND LOCATIONS WITH FIRE MARSHAL
- NUMBER OF OCCUPANTS SERVED BY EXIT EXTERIOR DOOR WIDTH PROVIDED (IN INCHES)
- EXTERIOR DOOR WIDTH REQUIRED (IN INCHES), 32" MIN.
- INDICATES ACCESSIBLE ROUTE
- INDICATES EXIT LIGHT, SEE ELECTRICAL DRAWINGS



3 MINIMUM DOOR OPENING CLEAR(2)
34" = 1'-0"



3 MINIMUM DOOR OPENING CLEAR(2)
34" = 1'-0"



1 SHOP BUILDING EXITING DIAGRAM