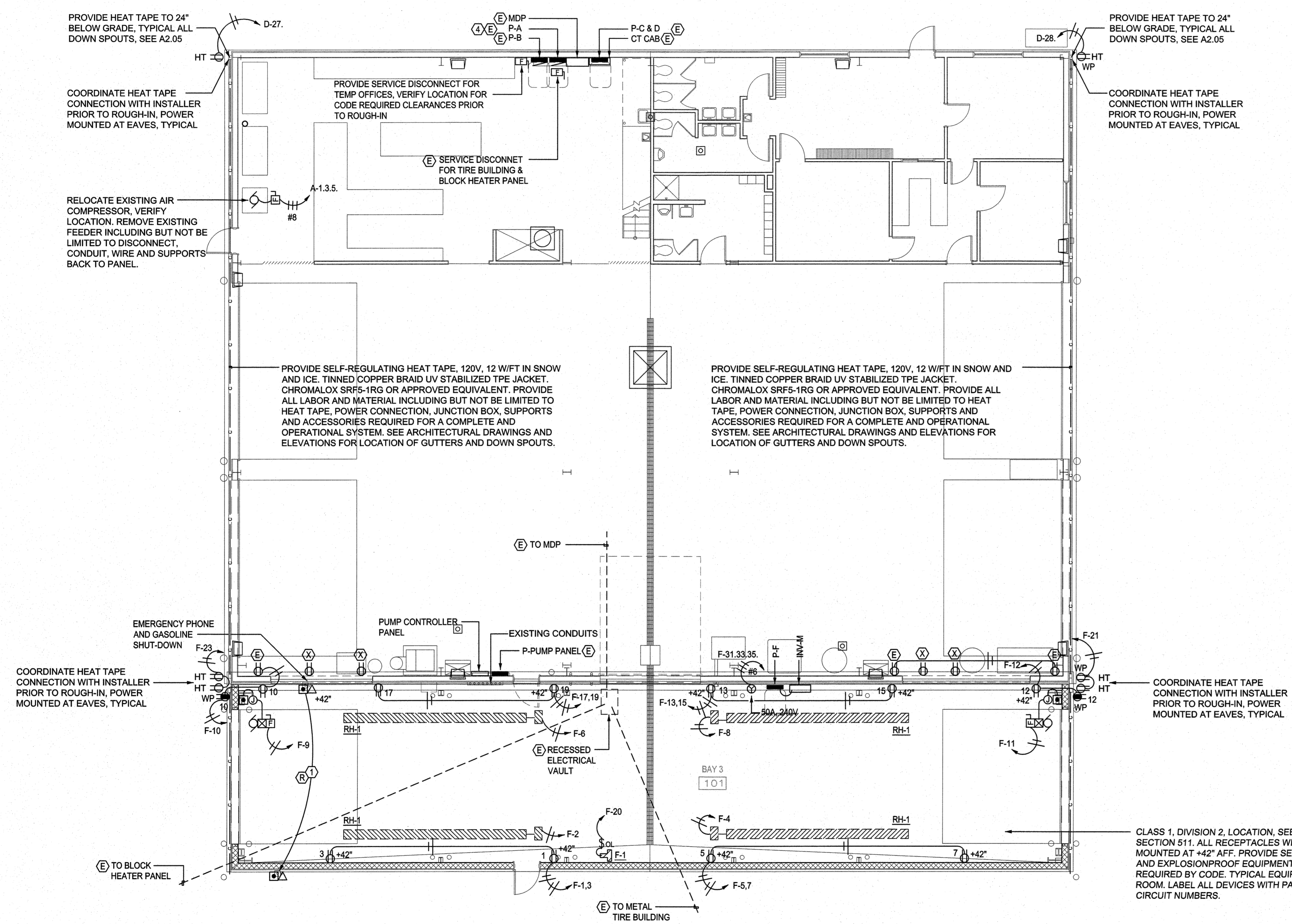


COPYRIGHT 2016
 STEELE ASSOCIATES ARCHITECTS, L.L.C.
 All rights reserved. Reproduction or use in any form or by any means (graphic, electronic, mechanical, etc.) without written permission of STEELE ASSOCIATES ARCHITECTS, L.L.C. is unlawful and subject to criminal prosecution.
 REGISTERED PROFESSIONAL ENGINEER
 18197
 OREGON
 DEC. 6, 1995
 JOHN FRANK ROGERS
 EXPIRES 12/31/18



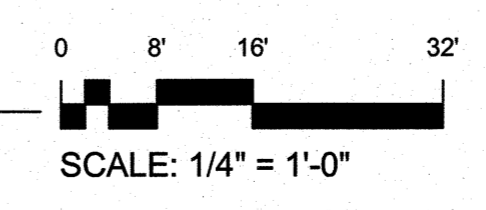
GENERAL NOTES:

1. ELECTRICAL CONTRACTOR IS RESPONSIBLE TO REFERENCE CURRENT EDITION OF THE NATIONAL ELECTRICAL CODE FOR CONDUIT FILL FOR THE EXACT TYPE OF CONDUCTOR BEING INSTALLED AND SIZE THE CONDUIT AS REQUIRED BY CODE.
2. ELECTRICAL CONTRACTOR IS RESPONSIBLE TO VERIFY VOLTAGE DROP FOR EXACT ROUTING AND LENGTH OF ALL CONDUCTORS.
3. VERIFY AND CONFIRM ALL DIMENSIONS AND CONDITIONS PRIOR TO START OF WORK. NOTIFY ARCHITECT OF ANY DISCREPANCIES PRIOR TO START OF WORK.
4. PATCH AND REPAIR EXISTING WORK DAMAGED DURING CONSTRUCTION OF NEW CONDITION.
5. SEE ARCHITECTURAL DRAWINGS FOR LOCATIONS OF ALL FIRE RATED WALL. PROVIDE FIRE STOPPING AS REQUIRED FOR RATING.
6. PROVIDE TYPED CIRCUIT LABELS INDICATING THE PANEL AND CIRCUIT OF EVERY RECEPTACLE SHOWN ON DRAWINGS, TYPICAL.
7. TELEPHONE / DATA OUTLET: PROVIDE 4S JUNCTION BOX WITH SINGLE GANG P-RING AND 1" CONDUIT WITH PULL STRING TO ACCESSIBLE CEILING SPACE OR TELEPHONE TERMINAL BOARD. MINIMUM OF 6" ABOVE CEILING. RECEPTACLE AND TELE/DATA OUTLETS WILL NOT BE MORE THAN A 3' APART, PROVIDE EXTRA BRACING AS REQUIRED.
8. TELEVISION OUTLET: PROVIDE 4S JUNCTION BOX WITH SINGLE GANG P-RING AND 1" CONDUIT WITH PULL STRING TO ACCESSIBLE CEILING SPACE. SEE ARCHITECTURAL ELEVATIONS FOR HEIGHTS, MOUNT DEVICES CENTER LINE OF TELEVISION. RECEPTACLE AND TV OUTLET WILL NOT BE MORE THAN 3' APART, PROVIDE EXTRA BRACING AS REQUIRED.

SHEET NOTES:

- ① EMERGENCY PHONE AND GASOLINE SHUTDOWN WILL BE RELOCATED. VERIFY WIRE TYPE AND CONDUCTOR SIZE AND ROUTE CONDUCTORS FROM ORIGINAL CONNECTION POINT TO LOCATION ON DRAWINGS. COORDINATE WITH DEMOLITION OF WALL. PROVIDE ALL LABOR AND MATERIAL INCLUDING BUT NOT BE LIMITED TO CONDUIT, CONDUCTORS, SEAL-OFFS, JUNCTION BOXES AND SUPPORTS.
- ② NOT USED
- ③ NOT USED
- ④ PROVIDE TWO (2) 20 AMP 1 POLE GFCI CIRCUIT BREAKERS IN EXISTING PANEL D FOR HEAT TAPE CONNECTION. EXISTING MANUFACTURER IS SQUARE D

1 FLOOR PLAN - POWER & SIGNAL
 1/8" = 1'-0"



BLS - TRANSPORTATION FACILITY 2017
 501 SE 2ND STREET BEND, OR
**FLOOR PLAN - POWER & SIGNAL
 SHOP BUILDING**

JOB NO.	16116.01
DATE	7/12/2017
DRAWN BY	JJD
CHECKED BY	JFR
REVISIONS	DATE
PERMIT SUBMITTAL	07/14/2017

SHEET NO.
E1.28

STEELE ASSOCIATES
 ARCHITECTS LLC
 686 NW YORK DRIVE #150
 541.382.9867 FAX 541.385.8816
 BEND, OR 97703
 info@steele-arch.com

PERMIT REVIEW SET